



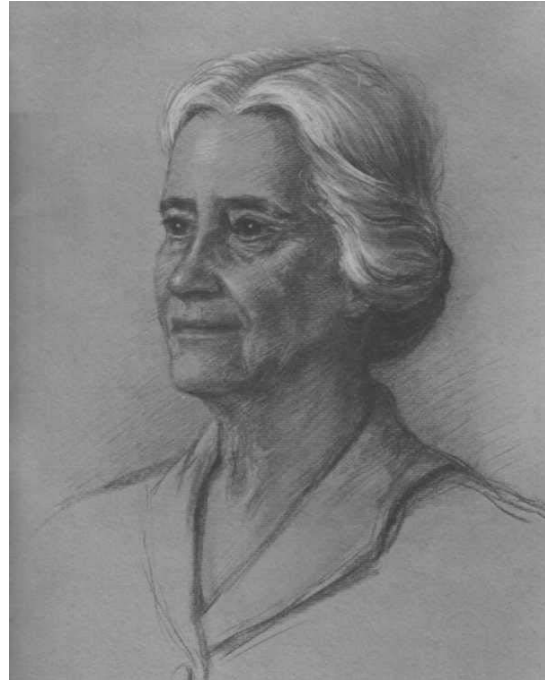
*The World Chief Guide*

*Olave Baden-Powell*

*Portraits*



Portrait by Grace Wheatley, 1960.



Portrait by Juliet Pannett, 1975



The World Chief Guide had this photograph taken as a record for publication in the Guides magazines after her death. she is pictured wearing all her medals, including the insignia of a Dame Grand Cross of the Most Excellent Order of the British Empire, a Campaign Medal and other Orders and Awards.